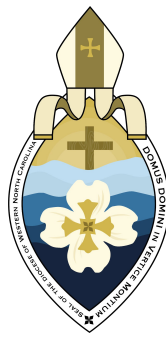


**The Episcopal Church of the Transfiguration:  
a faith community for all seasons**

# **Our Parish Profile 2022**





The Episcopal Diocese of Western North Carolina  
The Rt. Rev. José Antonio McLoughlin, Bishop

Thank you for your interest in the Diocese of Western North Carolina and, particularly, your interest in The Episcopal Church of the Transfiguration, Bat Cave. The congregation will tell you their story in this Profile. Please allow me to tell you a bit of the story of our Diocese.

Our diocese consists of 28 counties in Western North Carolina. We are made up of 62 parishes and six summer chapels and worshipping communities. Around 15,000 people make up the Diocese. Although we have several larger churches, many of our towns and parishes are smaller in size, but just as strong in faith. We are, of course, situated in or near beautiful mountains, streams, and valleys.

That is a demographic view of the Diocese. We are so much more. Our mission statement is: "Walk in the Way. Widen the Walls. Wake up the World." This mission statement guides all we do to serve God's people and share the love of Christ.

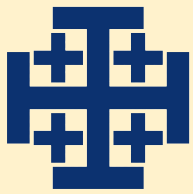
Our clergy are collegial, friendly and committed to serve our Lord. If you are called to serve here, you will participate in Fresh Start to help you become acclimated to the Diocese and have a support group among your fellow presbyters, including a mentor.

We are a diocese of faithful lay people and clergy striving to better know Christ and to serve God in many, many ways. Our parishes are sometimes very different, but they are all drawn together by a call to serve and a sense that they are part of the wider Body of Christ.

May God bless you and the Discernment Committee as you begin a process of mutual discernment.

Faithfully,

A handwritten signature in black ink, appearing to read 'José Antonio McLoughlin'.



# The Episcopal Church of the Transfiguration

Bat Cave, North Carolina

Diocese of Western North Carolina



## Table of Contents

|                                   |       |
|-----------------------------------|-------|
| Prayer for Discernment            | 2     |
| Mission Statement                 | 3     |
| Who We Are                        | 4-5   |
| The Rector We Seek                | 6     |
| Our History                       | 7-8   |
| Worship Services                  | 9     |
| Parish Fellowship                 | 10    |
| Stewardship                       | 11-12 |
| Financial Report and Compensation | 13    |
| Lay Ministries                    | 14-15 |
| Outreach Ministries               | 16-18 |
| Our Facilities                    | 19-21 |
| Our Voices                        | 22    |
| Where is Bat Cave, NC?            | 23    |
| The Diocese                       | 24    |
| Contact Information               | 25    |
| Useful Links                      | 26    |

**Full Time Position  
Compensation Package with Benefits**

**To apply, please send:**

**Letter of Interest  
Resume  
OTM Portfolio**

**to:**

**The Rev. Canon Augusta Anderson  
Canon for Transition Ministries  
[canonaugusta@diocesewnc.org](mailto:canonaugusta@diocesewnc.org)**



### Discernment Committee Prayer

**Dear Lord, thank you for the unconditional love and constant support you provide for every one of your flock. All are loved and asked to love one another.**

**We open our hearts, clear out the clutter, listen for your word and ask for the courage to act upon it and not ours. For your wisdom is infinite. May love and the Holy Spirit move in whomever you have chosen so that they are drawn to join their light with ours.**

**And let that light and love expand until the whole Earth is bathed in it! In the joy of Jesus' name. Amen.**

## Mission Statement

Our mission as The Church of the Transfiguration is to acknowledge Jesus Christ as revealed to us in the Scriptures through worship, prayer, and study and to proclaim the Good News joyfully in a ministry of servanthood.



## Who We Are

As one long-time parishioner put it recently, “There is a sweet, sweet spirit in this place.” Our Parish serves a congregation of year-round and part-time residents, people born and raised in the area and, like our founders, the Sisters of The Transfiguration, visitors and people from elsewhere. While our lovely mountain terrain may separate us in distance, our parish family is united in our love for one another and this sacred space. We continue to grow spiritually and with dedication to service for others. We honor our long history and hope to build upon this solid foundation with joy for the future.

- We are a church family with a big spirit seeking a new rector who guides, counsels, and inspires.
- We enjoy celebrating our diverse gifts and talents with playfulness and humor.
- We are adaptable, flexible and supportive of one another.
- We are a hands-on parish, ready and willing to do the work!
- We are committed participants in worship and lay ministries.
- We feel the spirit of God guiding our outreach ministries in The Hickory Nut Gorge and beyond.
- We are blessed beyond measure by the beauty of our church and natural surroundings.
- We are open and inclusive, newcomers are welcome to join right in!
- We are a transformational church (high energy/ high satisfaction) congregation (based on 2022 results of the Congregational Assessment Tool survey).
- We are the only Episcopal church in the area.



Transfiguration Family - Sept 2022

# Transfiguration at a Glance

We met the Covid 19 pandemic head on, responding in creative ways to continue offering worship, including “parking lot” services, “drive up” communion and online worship. Our service ministries continued uninterrupted. We have recently welcomed nine new church members.

## The 2022 Parish Survey

- 38% have been attending more than 10 years; 35% for 5-10 years.
- 18% have been attending 2 years or less.
- 74% are over age 65.
- 67% of us have graduated from college; 42% have post graduate education.
- 60% live in households with 2 or more people; 27% live alone.
- 37% live more than 10 miles from church.
- 84% attend church 3 times or more per month; 30% attend every week.



Blessing of the Animals 2021

|  | Year to Date | 2021 | 2019<br>(Pre-Covid) |
|--|--------------|------|---------------------|
| Baptisms                                   | 2            | 0    | 1                   |
| Confirmations                              | TBD          | 0    | 2                   |
| Marriages                                  | 0            | 0    | 0                   |
| Burials                                    | 7            | 3    | 7                   |
| Sunday Services / Holy Eucharist           | 72           | 82   | 102                 |
| Weekday Services / Healing/ Holy Eucharist | 4            | 0    | 37                  |
| Private Eucharist                          | 8            | 3    | 0                   |
| Average Sunday Attendance                  | 42           | 29   | 66                  |
| Online Service Viewership                  | 31           | 39   | N/A                 |



Sending love with Bare Necessities project kits to Haiti

# The Rector We Seek

We seek a Rector who will **Shepherd** us in the seasons of our lives, walking alongside us, guiding us, and empowering our spiritual growth and ministries. We are a flock ready to love and support our shepherd.

We seek a Rector who will be an **Educator**, helping us to develop a deeper relationship with God guided by the Holy Spirit; someone who will provide educational opportunities for spiritual development through study of the scriptures. We respond best to sermons that are relevant and inspiring, containing wisdom that will stay with us as we go out into the world.

We seek a Rector who is **Gracious** and who will fully embrace our commitment to Hospitality and Inclusion; someone who is strong in pastoral care and passionate about community outreach; someone who will join us as we support and care for one another and our neighbors, reflecting Christ's message of Love, Peace, and Grace.

We seek a Rector who will be an **Innovator**, helping to develop and guide us in our vision for the future; someone who will continue to invigorate our programs for youth, for seniors, and the stages in-between; someone who is energized by the opportunity to develop the land that has been graciously donated to the church over the past three years. We seek someone who is drawn to the stewardship of caring for the stunning natural beauty of God's creation in our parish area.

*So keep watch over yourselves and over all the flock which the Holy Spirit has placed in your care. Be shepherds of the church of God, which he made his own through the blood of his Son. ~ Acts 20:28*





## Our Living History

The ministry that draws us together today as the Church is a continuation of outreach begun by the Sisters of the Transfiguration when they came to Bat Cave back in 1897. In 1906, the Sisters opened a chapel/school for local children. The school eventually closed, but the Sisters offered their chapel/school as a mission church to the Diocese of North Carolina. Our connection to the Sisters and our commitment to outreach continues to connect our past to our future.

The first Priest in Charge was appointed in 1923. Repairs were made to the building and pews were installed. When Father Frank Saylor came to be the Rector of the church in 1939, the church building was remodeled again to accommodate the growing congregation.

In May of 1945, the church building was consumed by a fire that started in a nearby dwelling. Fr. Saylor was there and able to remove the altar, the communion rail and baptismal font. Soon afterwards, Bishop and Mrs. Paul Matthews deeded the tract of land where the present church is located, and Fr. Saylor began the process of building a new church with his congregation. Everyone chipped in. There would be thirty or forty members at a time helping with the construction. Some did electrical work, others made the pews. The stone for the church was quarried locally. Fr. Saylor did much of the work himself, building the church doors and other items in the woodworking shop next to the old rectory. He stained the wood panels in the church with used motor oil. When the church was completed in 1947, it was paid for.

Our history is alive in us today, and we can feel that same energy and love for our mission as members of Transfiguration. We still roll up our sleeves and pick up hammers and shovels when work needs to be done. We reach out into the community to care for our neighbors as the Sisters had done long before us.



The First Church was moved from the Sisters' property in 1915.



The remodeled church building on the River where the Hickory Nut Creek joins the Rocky Broad, (present location of the Bat Cave Fire station.)

## The Sisters of the Transfiguration are located in Cincinnati, Ohio, so how did they end up in a place called Bat Cave?

We have the Esmeralda Inn and Paul Matthews, Bishop of New Jersey to thank for this. In 1897, Paul Matthews and his wife Elsie had spent their honeymoon here at the Esmeralda Inn. Later that year, when Paul's sister, Eva Lee Matthews (soon to become Mother Eva Mary of the Community of the Transfiguration) was in need of a rest (from preparation beginning a community including her ministry caring for poor children and mothers in Cincinnati), Bishop Matthews recommended she come to the Esmeralda. She came with Beatrice Henderson, later Sister Beatrice Martha. While there, she asked if there was a house nearby that would make a good retreat house for the Sisters. Mr. John Dotson said he knew a farmhouse nearby that they could rent for \$25 a year. The house was rented and later purchased.

In 1900, the public schools were only open for six weeks a year, and many of the children did not go to school at all, so Sister Beatrice and Mother Eva began teaching children in the area. Since the only church around was inactive at that time, they found a level place on their land and built a house that became a combination chapel and school. In 1915, public schools had improved and the church building was turned over to the Diocese of North Carolina.

Our connection to the Sisters continues to be an important bond. "Transfiguration House" still remains their retreat house in Bat Cave, and our church often gathers there for dinners or small parish meetings and forest walks with Mattie Decker, CT Oblate who now has her home base there. Thanks to the collaboration and work of the Sisters over many years with Conserving Carolina, this sacred land is now a Preserve, and provides sanctuary for many who come regularly for "forest bathing" walks in the woods and along the Rocky Broad River and Minehaha falls—all part of their land. <https://conservingcarolina.org/forest-bathing/>

Some of our members are Associates of the Society of the Transfiguration. <https://www.ctsisters.org/>



**"Mother Eva Mary and Sister Beatrice, Edward, from Bethany Home in Cincinnati, and Thomas, the horse." (1899)**



**Kate Bower, Director of the Transfiguration Spirituality Center (TSC) at the Convent of the Transfiguration, Glendale, Ohio; Mattie Decker, Oblate Transfiguration Retreat Home; Rev. Anne Bridgers; Sister Jacqueline Marie, C.T.; Veryle Lynn Cox, Oblate; Dixon Bridgers.**

## Our Worship Services

We offer three worship opportunities on Sundays: the 8AM Rite II Eucharist, currently serving four to ten faithful worshippers. This service does not include music; the 10AM service, also Rite II, currently serves 30-45, and includes hymns mainly chosen from *The Hymnal*. The 10AM service is available online. A Sunday evening Taize (candlelight) service featuring prayer, scripture reading and music will begin in November at 5:30PM.

There are periodic times of Adult Formation (Sunday School) between services. When gifted by the presence of children, nursery and children's Sunday School are available.

Our talented and enthusiastic choir rehearses before the 10AM Sunday service.



Candlelight Christmas Eve with Carols

## Additional Worship Services

- Ash Wednesday with Imposition of Ashes
- Maundy Thursday
- Good Friday - Stations of the Cross
- Easter Day followed by Easter Egg Hunt for attending children
- Holy Hilarity Sunday
- Spring and Fall Outdoor Services
- Candlelight Christmas Eve with Carols
- Christmas Day
- Occasional Special Services (blessing of pets, remembrance of loved ones)



Easter Egg Hunt Special Guest

# Parish Fellowship

Does anyone do fellowship better than our vibrant little church? Each church service is like a reunion; we joyfully greet each other as a family during The Peace. If there are not enough church celebrations, birthdays, and holidays to share, we make them up, as in the recently-formed men's group that holds periodic "Grill and Chill" dinners.

Several of our outreach ministries have a focus on fellowship: Our M&M (Mature and Motivated) group provides programs and field trips for parishioners and the community. Other parish fellowship activities include: Backyard Sports, Christmas Angel Tree, Spiritual & Memorial Garden maintenance, Souper Bowl Sunday, Firewood Ministry, and more.

We are fun-loving by nature and genuinely enjoy getting together. At "pre-eulogy" dinners we gather to hear presentations given by parishioners who tell their life stories over dinner at a local restaurant. Informal small groups often form to take in plays, movies, the symphony and professional baseball games. Building relationships through fellowship has great significance in our parish family.



M&M Trip to Strawberry Hill



Men's Grill and Chill



Coffee Hour Discussions

# Stewardship

*All things come of Thee, O Lord and of thine own have we given Thee.*

**Time and Talent:** The Church of the Transfiguration is blessed with a congregation that is highly engaged in the stewardship of this church, adjoining buildings, and the nineteen acres surrounding the church itself. We believe it is important to follow Christ's example in a ministry of servanthood. This year we celebrate the seventy-fifth anniversary of the church in its present location; parishioners continue to assist with the maintenance of our buildings and grounds. Periodic parish workdays are scheduled in addition to the weekly attention given by a rotation of parishioners to ensure we remain a place of hospitality and welcome for all.

The adjacent Transfiguration Preserve, property of the Sisters of the Transfiguration, in collaboration with Conserving Carolina, allows us to creatively envision future stewardship of our adjoining properties. The recent gracious donations of seventeen acres to our campus provide exciting opportunities for development through the leadership of our future Rector and Vestry.



Gardening, cleaning, spraying, painting...

**Treasure:** Our annual Stewardship campaigns encourage us to share our treasure as freely as we do our time and talents. Dedicated financial support allows our church to continue to grow and expand outreach activities in our efforts to meet the needs of the parish and the community beyond.

Our endowment fund is managed by Episcopal Church Foundation and monitored quarterly by our Finance Committee and Vestry.

In 2022, a Vestry resolution mandated that 10% of all unrestricted gifts be designated to support outreach ministries.

The parish has a planned giving program for legacy gifts called the Tree of Life Society which provides guidance for those who wish to remember the church in their estate planning.

Through the leadership of past and present Vestry members and God's all-sufficient grace, we have been able to achieve budget surpluses and grow the financial foundation which sustains our parish and ministries.

Our congregation supports the church with financial contributions or labor as special needs arise for church repairs and upgrades. Congregants enthusiastically support and give generously to the local Hickory Nut Gorge Outreach by participating in Souper Bowl Sunday, the Angel Tree Christmas project, and Back to School supply drives.



# Financial Statement

## CHURCH OF THE TRANSFIGURATION - BAT CAVE

### REVENUES

|                                 | Budget 2022    | Actual 2021    | Actual 2020    | Actual 2019    | Actual 2018    |
|---------------------------------|----------------|----------------|----------------|----------------|----------------|
| <i>Pledge</i>                   | 131,000        | 121,762        | 133,189        | 150,594        | 139,365        |
| <i>Plate</i>                    | 1,500          | 1,832          | 464            | 2,951          | 3,891          |
| <i>Endowment Interest</i>       | 6,400          | 3,952          | 2,980          | 4,383          | 3,413          |
| <i>Trust Income</i>             | 30,000         | 32,000         | 22,500         | 10,601         | 12,685         |
| <i>Artz Bequest</i>             |                | 97,800         |                |                |                |
| <i>Other</i>                    | 1,500          | 1,870          | 3,964          | 8,396          | 5,515          |
| <b><i>Operating Revenue</i></b> | <b>170,400</b> | <b>259,216</b> | <b>163,097</b> | <b>176,925</b> | <b>164,869</b> |

### EXPENSES

|                                  | Budget 2022   | Actual 2021   | Actual 2020   | Actual 2019   | Actual 2018   |
|----------------------------------|---------------|---------------|---------------|---------------|---------------|
| <i>Clergy Compensation</i>       | 47,324        | 93,510        | 108,533       | 105,207       | 103,463       |
| <i>Other Payroll</i>             | 7,501         | 6,727         | 5,670         | 2,335         |               |
| <i>Building &amp; Grounds</i>    | 22,748        | 17,105        | 18,808        | 21,466        | 23,157        |
| <i>Ministries &amp; Programs</i> | 17,000        | 13,670        | 9,946         | 13,087        | 12,021        |
| <i>Diocese Support</i>           | 13,200        | 13,200        | 13,200        | 12,400        | 11,400        |
| <i>New Rector Search</i>         | 15,700        |               |               |               |               |
| <i>Office &amp; Other</i>        | 8,704         | 9,833         | 5,736         | 6,500         | 7,168         |
| <b><i>Operating Expenses</i></b> | <b>132177</b> | <b>154045</b> | <b>161893</b> | <b>160995</b> | <b>157209</b> |

|                                     |               |                |              |               |              |
|-------------------------------------|---------------|----------------|--------------|---------------|--------------|
| <b><i>Net Surplus (Deficit)</i></b> | <b>38,223</b> | <b>105,171</b> | <b>1,204</b> | <b>15,930</b> | <b>7,660</b> |
|-------------------------------------|---------------|----------------|--------------|---------------|--------------|

@ 7/31/2022

Funds on Hand @ Year End

|                                |                |                |                |                |                |
|--------------------------------|----------------|----------------|----------------|----------------|----------------|
| <i>Operating Account</i>       | 12592          | 7,003          | 10,917         | 2,633          | 3,717          |
| <i>Money Mkt</i>               | 151548         | 155,323        | 52,499         | 148,212        | 97,867         |
| <i>SSGA Investment Acct</i>    | 285231         | 314,753        | 249,410        | 127,716        | 146,846        |
| <b><i>Total Cash Funds</i></b> | <b>449,371</b> | <b>477,079</b> | <b>312,826</b> | <b>278,561</b> | <b>248,430</b> |

# Lay Ministries



All members are encouraged and invited to take part in lay ministries. Everyone's participation enriches our worship experience in meaningful ways. It is encouraging and exciting to see that these lay ministries are being performed by 37 different church members. With an average weekly attendance of 42 people, our lay ministry participation is a testament to the commitment and enthusiasm of our parishioners.

**Lay Readers:** Two lay readers for each service.

**Chalice Bearers:** Serve as acolytes and administer the chalice .

**Altar Guild:** Prepares the altar for Holy Eucharist and other church services. In addition, they provide and arrange the flowers for services, and afterward share these flowers in a celebration ministry.

**Ushers:** Welcoming faces who greet newcomers and visitors to the church, as well as assisting during services.

**Music Ministry:** Choir Director and Choir, singing, managing sound and operating our electronic organ ("D.J.'s for the Lord").

**Videographers:** Set up video equipment and record services for our website.

Other Volunteer Ministries:

- Administrative Assistance
- Webmaster / Communications
- Cleaning Crews / Garden Angels
- Caring Friends
- Cemetery Committee
- Finance Committee
- Coffee Hour Hosts
- Delegates to the Diocesan Convention





## Other Community Volunteer Roles

- Hickory Nut Gorge Outreach
- The Elizabeth Project Mentoring Program
- Lake Lure Artists Group
- Lake Lure Olympiad
- Lake Lure Flowering Bridge

- Local Volunteer Fire Departments
- Lil's Thrift Store (benefits animal non-profits)
- Hickory Nut Gorge Foundation
- Friends of the Library



Patrick Warncke - Chimney Rock VFD



Alice Holland - Lake Lure Flowering Bridge



Marion & Fred Wilson  
HNG Outreach



JoAnne Ellingson - Lake Lure Olympiad

## Outreach Ministries

There are many ways to be involved at Transfiguration. We have hands-on opportunities to participate in Outreach through our Backyard Sports, Firewood, Bare Necessities, M&M (Mature and Motivated) Ministries and Hospice Pantry. These ministries bring together parishioners and members of the community to serve people in need. Other ministries, like Caring Friends, focus on caring for each other through meals, transportation to doctors, and respite care. Garden Angels, Prayer Shawl, Accountability and Discipleship Groups and Pre-Eulogy dinners provide fellowship and growth opportunities for parishioners. Relationship-building and Hospitality are at the core of all our ministries. Shining the light of God's love is something our parish strives to do in all our endeavors.



Backyard Sports After-School Program



Firewood Ministry



Bare Necessities



M&M Club



Fourth Sunday Hospice Pantry



Caring Friends Ministry



Garden Angels



Pre-Eulogy Dinner Club



Prayer Shawl Ministry



Accountability & Discipleship Groups



Children's Ministry



Sing in the choir



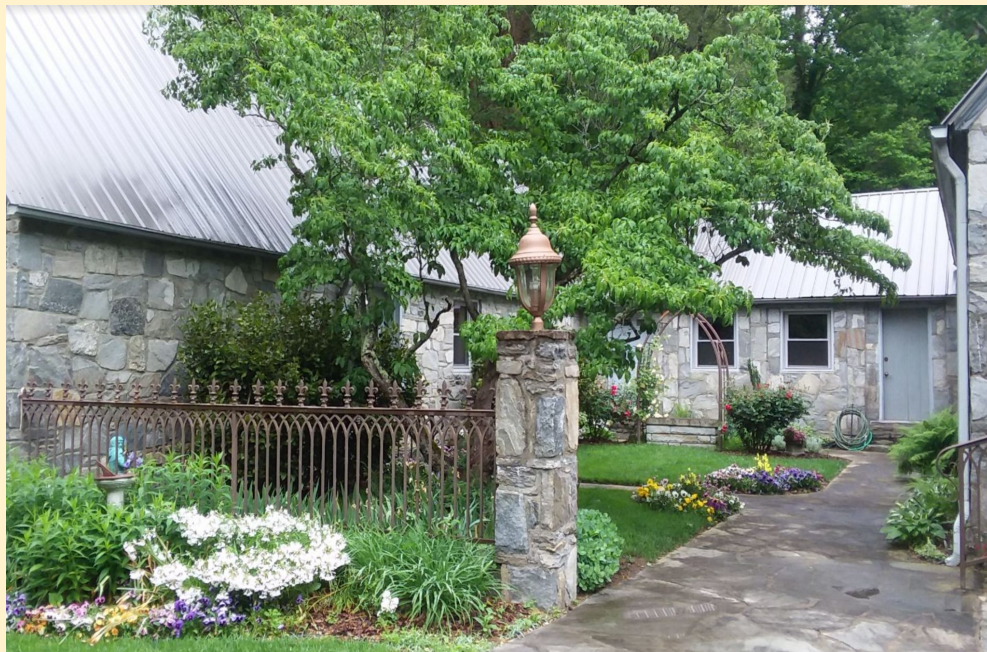
Helping with Services

# Our Buildings and Grounds

Our beautiful little stone church is nestled on a mountain side overlooking the Hickory Nut Gorge. Our sanctuary has seating for 110. With the windows open, we can hear the water cascading down the Rocky Broad River just across the road.

The Parish Hall is attached to the church by a hallway that provides entrance to the sacristy, a small area for the choir to robe, and our restrooms. The Parish Hall includes a small but well equipped kitchen, an office for our treasurer and attic storage.

Between the Parish Hall and Sanctuary, our courtyard outside is home to our much admired Spiritual Garden. Behind the church on the hillside is our cemetery and Memorial Garden.



# Parish Hall & Gardens



## Renovations and Improvement Projects

### Completed Projects

Updated the Heating/Air Conditioning system for the Church and Parish Hall

Renovation of Parish Hall including installation of sound reducing baffles; Installed energy efficient windows in Parish Hall and Sanctuary.

Saylor House (Rectory) updated; gas fireplace repaired.

Installed Metal Roofs and keyless entry/exit on all Church buildings.

Installed new well and pump with water filter; septic field serviced.

Repaired the structure within the Bell Tower (on-going)

Restored the dossal at the Altar

Restoration and beautification projects: lower cemetery, memorial garden, and church grounds; added pollinator garden.

### Upcoming Projects

Continued remediation efforts to address water accumulation issues.

Re-paving project for the parking lot and repair of gravel cemetery road.

Strategic Planning for 17 acres recently donated.



Spiritual Garden



Memorial Garden

## The Saylor House

Located beside the church, this three bedroom, two bath ranch style house has a beautiful view of the Hickory Nut Gorge. Across the street is the Rocky Broad River cascading its way toward Lake Lure.

This space currently houses the Rector's office and nursery, and provides meeting space for our Vestry, various committees, ministry, and fellowship opportunities.



# Our Voices

“The Church family, how they all love and care about each other, the church, and the community. How they all chip in to keep the church and its principles alive.”

“The church is truly the people executing the teaching. ‘Walking the Walk’ is this church’s greatest asset. I am grateful for the care taken to explain the readings and gospel and to relate them to daily life.”

“There is a confluence of wonderful souls... contagious welcoming, inclusion and support.”

“Acceptance of all. Honesty in Christian love and friendship. Nothing matters about yesterday's failures or successes, just warm fellowship. What we have is true. We have but one clique and we are all in it. There is no hesitancy where there is need. We don't outsource our needs to vendors. In our church Christianity is a verb not an adjective.”

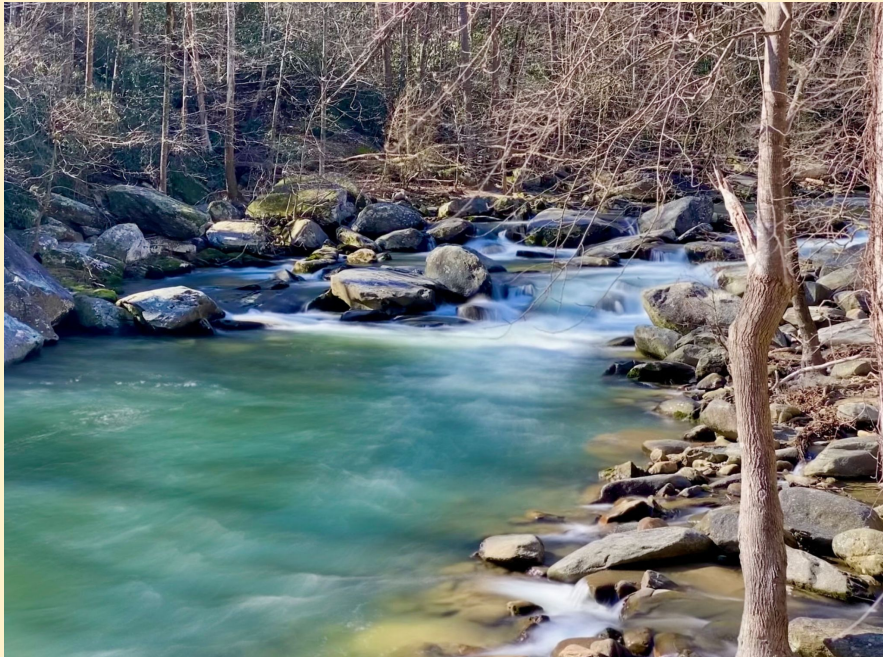
“I am thankful for all the Sisters and the Saints who have come before me and helped to create this church family of continued ministry. I give thanks for our church family, especially those who keep our ministries active and new.”

“I just love the 19 acres of beauty and peace...I can only guess how beautiful this will one day be.”

“Authentically friendly. Spiritually centered.”



## Where is Bat Cave, NC?



Bat Cave, North Carolina is located in the Hickory Nut Gorge, a place of rushing waters, rocky cliffs, and pristine forests. The Rocky Broad River cut through the mountains to create a 14 mile gorge which drops approximately 1,800 feet from the town of Gerton down to Lake Lure. This gorge and the area surrounding Lake Lure comprise the geographic area served by our Church.

One of the best known attractions in the area is Chimney Rock State Park. A few miles south of Chimney Rock is Lake Lure, with a sandy beach, swimming area, boating and water sports. The town of Lake Lure is both a popular seasonal resort area, with inns and restaurants, and home to others, many of whom are artists.

Other area attractions include the Blue Ridge Parkway; the Appalachian Trail; miles of hiking and biking trails; rivers for fly fishing; numerous golf courses. Only a short drive to Asheville, North Carolina and Greenville-Spartanburg, South Carolina, we enjoy proximity to cities with universities, cultural events, and shopping.



## The Diocese of Western North Carolina

The General Convention in 1895 established Western North Carolina as the missionary district of Asheville. In one generation, the new missionary district became self-supporting, and in 1922 became the Diocese of Western North Carolina. This year we celebrate 100 years as an established diocese. In January 1995, former Bishop Robert H. Johnson consecrated All Souls Church, located in Asheville at Biltmore Village, as the Diocesan Cathedral. Our present bishop, the Rt. Rev. José Antonio McLoughlin, was consecrated as the seventh—and first Hispanic—bishop of the Episcopal Diocese of Western North Carolina on October 1, 2016.

The following are excerpts from the Episcopal Diocese of Western North Carolina [website](#):

In the words of our current Presiding Bishop, the Most Rev. Michael B. Curry, “Jesus came and started a movement and we are the *Episcopal Branch of the Jesus movement*.”

The Episcopal Diocese of Western North Carolina is part of that movement. Together, as a community of more than 15,000 members in 63 year-round parishes, 6 summer chapels, 2 conference centers, 1 retirement community and 1 parochial school across the 28 western-most counties of the state, we collectively witness to God’s love for the whole world.

As a diocese, we acknowledge the Indigenous communities that once occupied this land and were harmed and expelled by settlers: The Catawba (Issa, Essa, Iswa) and Cherokee (Tsalagi) nations. Additionally, through the ongoing efforts of the diocesan Commission to Dismantle Racism, we stand in solidarity with all marginalized communities and condemn the acts of racism and ignorance towards any of our brothers and sisters. The growth of the Episcopal Church in Western North Carolina rests in equal measure to the faith, perseverance and ministry of women, persons of different sexual orientations and Latinos.

Our young people are a significant part of our vision in the diocese to “walk in the way, widen the walls, and wake up the world.” Learn more at the [diocesan website](#) about how our youth, young adult and college campus programs are structured to supplement the youth and young adult ministry programs of local parishes.



# Contact Information

## Discernment Committee

Nancy Scott - Chair

Julie Maziarka - Spiritual Guide

Dawn Milachouski - Vestry Liaison

Marilyn Floyd    Crystal Morrison

Annie MacNair    Carl Nelson

## Vestry

Tom Scott - Senior Warden

Patti Glasson - Junior Warden

Carlann Scherping - Clerk of Vestry

Mattie Decker    Alan MacNair

Dawn Milachouski    Danny Holland

Buddy Morrison

## Staff

JoAnne Ellingson - Treasurer

The Church of the Transfiguration

106 Saylor Lane

PO Box 130

Bat Cave, NC 28710

828-625-9244

The Rev. Anne Bridgers, Interim Rector



## How to Apply

Full Time Position  
Compensation Package with  
Healthcare Benefits (negotiable)

Please send:  
Letter of Interest  
Resume  
OTM Portfolio  
to

The Rev. Canon Augusta Anderson  
Canon for Transition Ministries

[canonaugusta@diocesewnc.org](mailto:canonaugusta@diocesewnc.org)



Church website: <https://www.ectransfiguration.org/>

Visit us on Facebook at *Church of the Transfiguration Bat Cave*

# WEBSITES AND LINKS

## AREA INFORMATION:

Town of Lake Lure Information: <http://www.townoflakelure.com/>

HNG Chamber of Commerce: <https://hickorynutchamber.org/>

Chimney Rock Village: <http://www.chimneyrock.org/>

Henderson County Information: <http://www.hendersoncountychamber.org/>

Rutherford County Information <http://rutherfordcountync.gov/>

## HEALTH CARE:

Mission Health ( NC): <http://www.mission-health.org/>

Pardee Hospital: [www.pardeehospital.org](http://www.pardeehospital.org)

Park Ridge Hospital: <http://www.parkridgehealth.org/>

Rutherford Hospital Systems: <http://www.rutherfordhosp.org/>

Greenville Hospital System (SC): <http://www.ghs.org/>

## EDUCATION:

North Carolina Public Schools: <http://www.ncpublicschools.org/>

Lake Lure Classical Academy: <https://www.llcharter.org/>

Colleges and Universities nearby: <http://www.colleges-near.me/city/lake-lure>



## OTHER:

Diocese of Western North Carolina:

<http://www.diocesewnc.org/>

Hickory Nut Gorge Outreach:

<http://www.hickorynutgorgeoutreach.org/>

Conserving Carolina: <https://conservingcarolina.org/>

Transfiguration Preserve:

<https://conservingcarolina.org/tag/tarr/>

Asheville Symphony: <http://ashevillesymphony.org/>

Craft Guild of the Southern Highlands:

<http://www.southernhighlandguild.org/>

Chimney Rock State Park: <http://www.chimneyrockpark.com/>

Hike Western North Carolina: <http://www.hikewnc.info/>